

## The double Lottchen

Make a DL Coil with two Moebius wires (see construction plan how to make a SP crystal)

First fabricate a core (center) like with the Moebius Coil (4 time M-Coil), then calculate the length of the wire wrap (4 time = x 4), and wind like with the Moebius wrap = outer wrap. Wind the outer wrap closely around the center (turn the center), begin at the center wrap this side where the connection is. Wind of the outer wrap till the end of the center wrap. Connect the center wrap and the outer wrap in series. One Moebius wrap is therefore winded around the other.

With the "construction of the Moebius wire" i let one wire shorter (f.e. that one with that you begin, make it always same!) so can i later the shorter one connect with the longer one of the other wrap when i want it connect and want connect the wraps in series. Or reversed (f.e. the longer one = plus and the shorter one = minus).

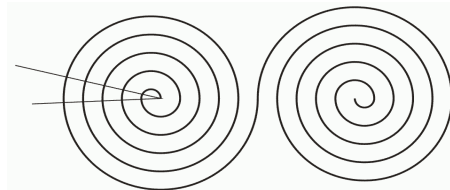
Very suitable lengths seem to be a fraction of the circumference of the sun (=  $4373\text{mm}/4 = 1093.25\text{mm}$ , look example 1) as center, or the fraction of the radius of the distance of the earth to the sun (=  $1496\text{mm}$ ) or the earth's orbit around the sun (=  $939.9\text{mm}$ ). Of course you can take these numbers also for the outer wrap wire. Notice, that the circumference of the sun divided by the speed of light results in a frequency of about  $14.587\text{ Hz}$  ( $4373097\text{km}/299792.458\text{km/s} = 14.587\text{ Hz}$ ).

In my opinion (and experience) this frequency suits best for to clock pulse this wraps.

### Calculation of the lengths of the wires:

The best ratio of the center wrap to the outer wrap is 1 to 4,5. That means, the outer wrap is  $4\frac{1}{2}$  times so long like the center wrap. You can take ratios of 1 to 4 to 1 to 5, must experiment a bit, because everyone winds a bit differently than the other person. Also the used magnetic wire is different from producer to producer. The diameter of the wire don't play a part, if you use the same diameter for both wraps. If you want to wind a smaller „Lottchen“, better take the factor 1 to 5 (example), otherwise 1 to 4,5.

Further you can bend the DL as SBB Coil or as double spiral (see below).



If you bend a double spiral of it, it makes sense, if you make 2 like this and move them at 90 degrees (crosswise). So you can pour it in Orgonit (plate, as pad for the Powerwand). Also inside the Zapper they act very harmonizing. They work also without clock pulsed electric power, with power about 1000 times stronger. There are many different possibilities for to wrap - experiment around!

It is an ideal supplement to the Moebius Coil on or in a SP crystal or a Powerwand. The knotted Moebius Coil radiates it's energy virgulately (= male, a Powerwand has so from the crystal top a reach of about 1000km to any billions km), quasi like a headlight (with special constructions it has this effect also backward as undertow). The DL radiates globularly (female) and spreads its energy regularly in the area, covers up the entire surroundings, but has never the same reach like a Powerwand. The reach of a DL is according to the size 200 to 100'000km (that in every direction), from 6500km it enshrouds the half earth. If you want to send most possible energy to a dedicated point, a Powerwand suits better than a DL, as protecting system however a DL is much better. According our

experiences it harmonizes extremely, it's the best medium against Haarp, bad astrological constellations (utilized by narrow minded people) and other disturbances of them, also from the astral level (4. dimension)... It's my latest development and actual still in the phase of experiment, but it has already exceeded all my expectations a lot.

Probably the DL is simpler to construct as a Moebius Coil, however more labour intensive (maybe wear protective gloves). So suits the DL for many people they don't dare to go up to a SP crystal. With the PW-Electronic you can drive it unproblematically. It acts stronger with a lowly resistive series resistor (R4, see PW-Electronic.pdf). It works also without crystals, but these cannot harm (f.e. 2,4 or 8 double termed crystals pour in with into the plate).

### **Example how to make a double Lottchen:**

Take enameled Copper wire 0.4 diameter.

Length of the center wrap here **149.6mm** (AE - fraction)

Length of the wire = 598.4mm plus connections

Total length of the center wrap (4 times Moebius wire) =  $149.6\text{mm} \times 4 = 598.4\text{mm}$  +  
connection length =  $598.4\text{mm} + 300\text{mm} = \mathbf{898.4\text{mm}}$ .

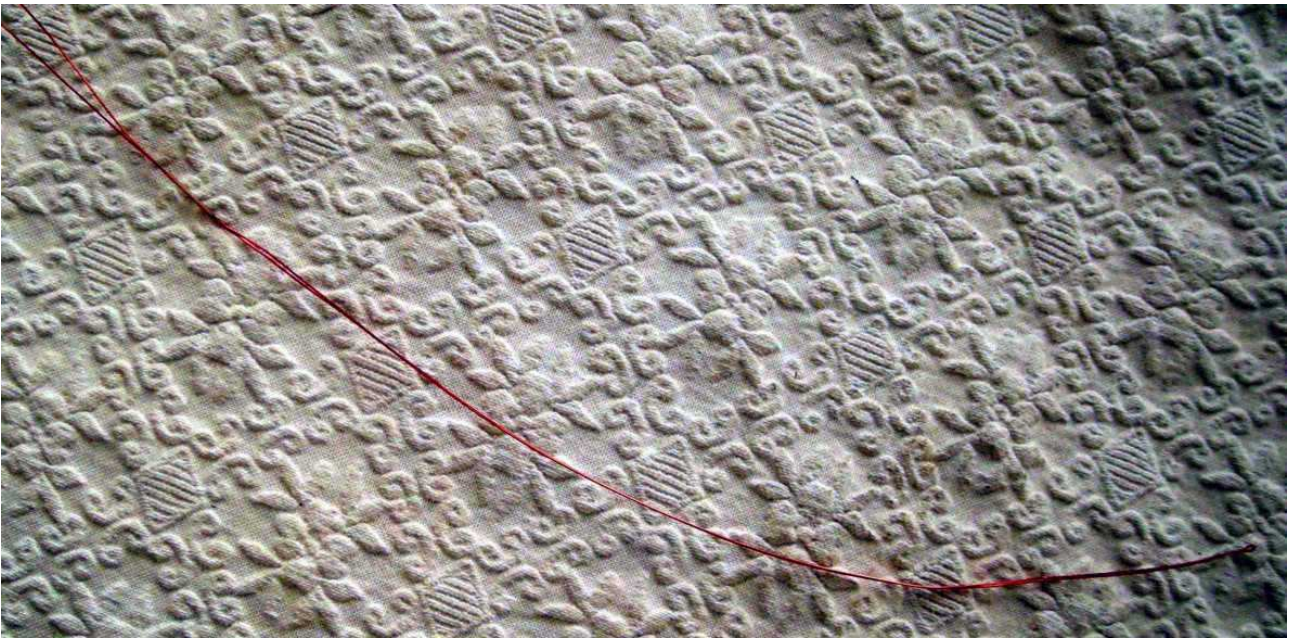
Outer wrap:

$149.6 \times 5 = \mathbf{748\text{mm}}$

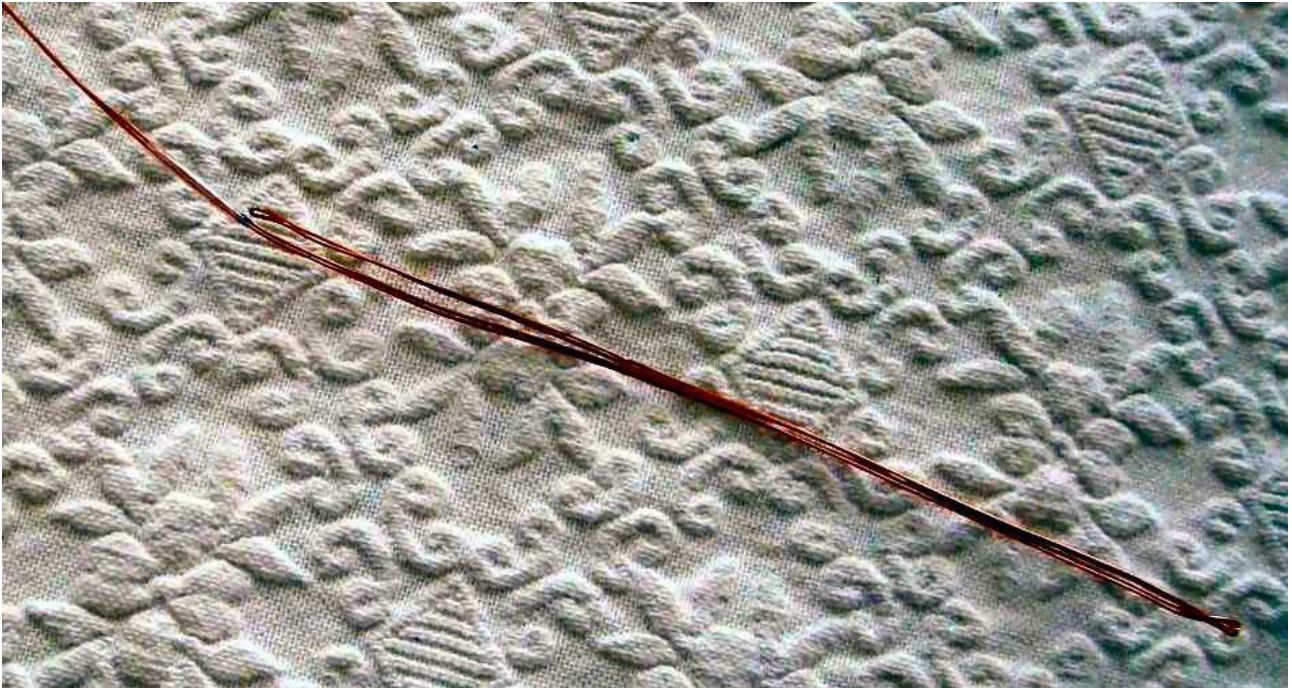
With a 4 times Moebius wire =  $748\text{mm} \times 4 = 2992$  + length of connection =  $2992\text{mm} + 300\text{mm} = \mathbf{3292\text{mm}}$  total length.

For this example we need so 2 enamelled Copper wires, the one is 898.4mm long (center wrap), the other one is 3292mm long (outer wrap).

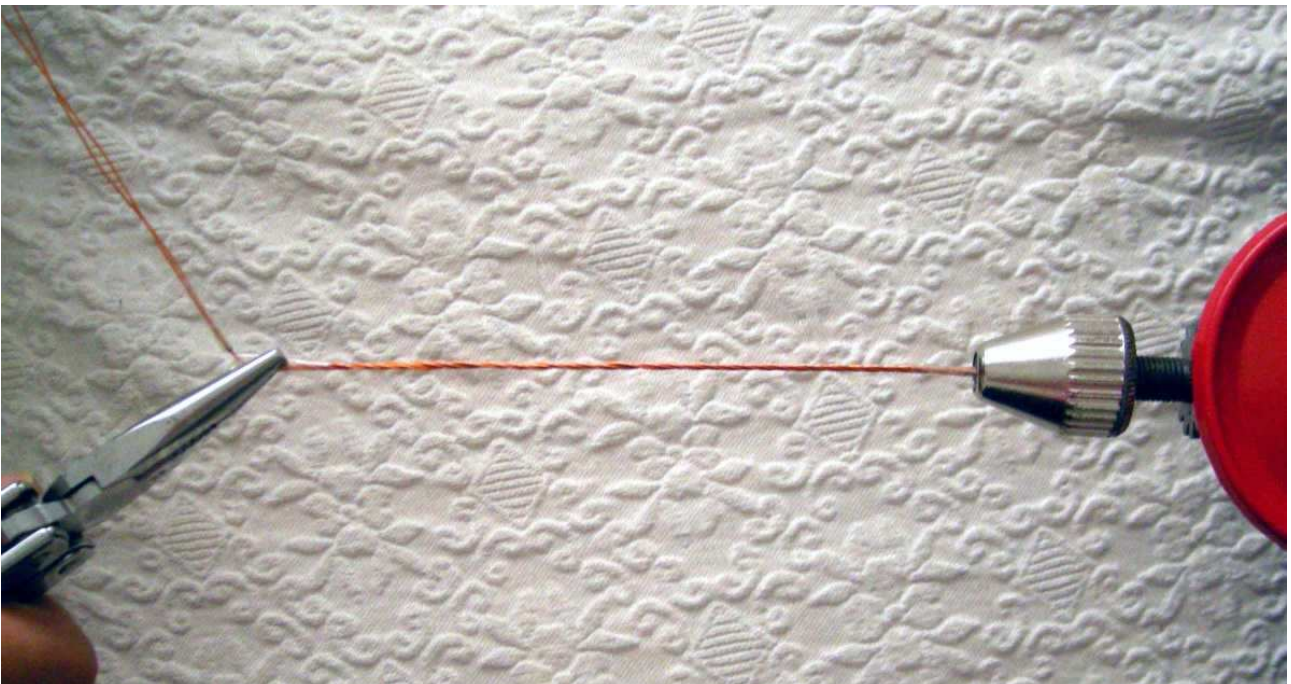
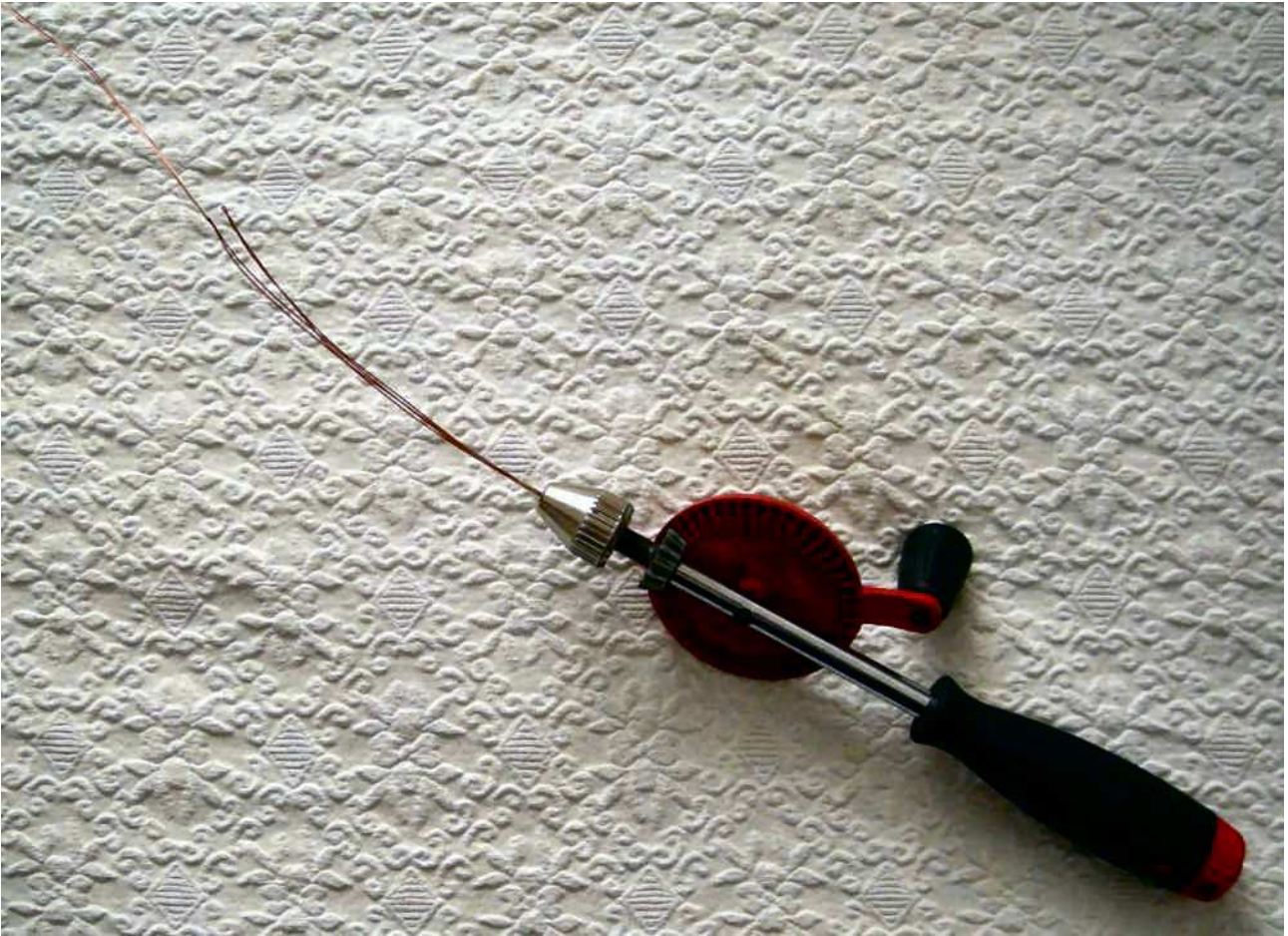
One connection wire you can make 180mm long and the other one 120mm long. Fold the wire about in the middle, whereby the one about 60mm longer is. Then stick an adhesive tape around the both wires, with 180mm or 120mm.



Now catch the wire in the middle (where it is folded) and put the middle to the begin of the adhesive tape (at 180mm or 120mm) and fold the four wires once more (like a "M"). At the "M" the connection wires a 180mm and 120mm should loll out at the "feet". These 4 times wires should have the length of 149mm + connection. The same at the outer wrap. Here the length should have 2992mm + connections.



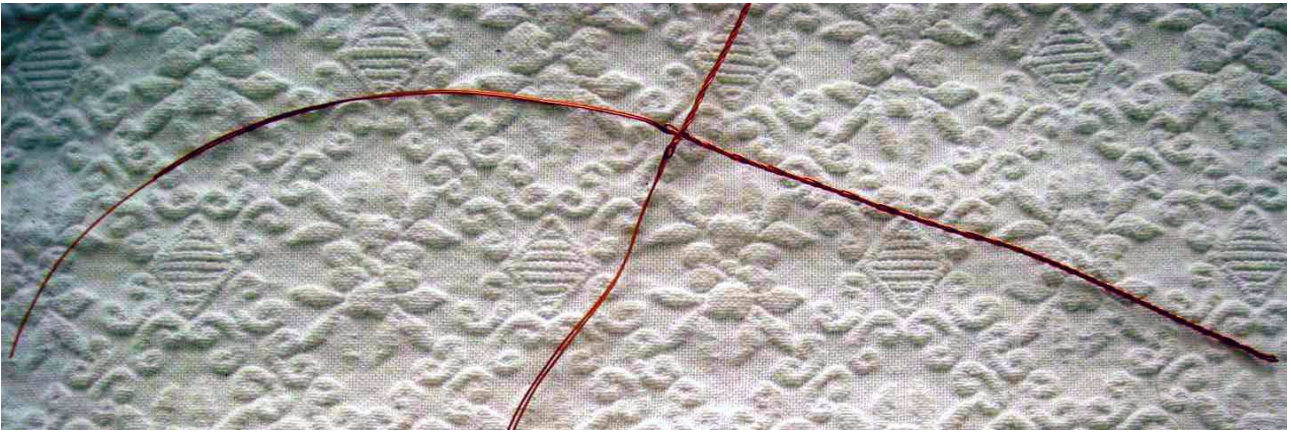
Now take the akku drilling machine (hand drill or a bended spoke), see "how to make a SP crystal", clamp the end (without connections) into the drill chuck (protect with adhesive tape), fix the begin anywhere.



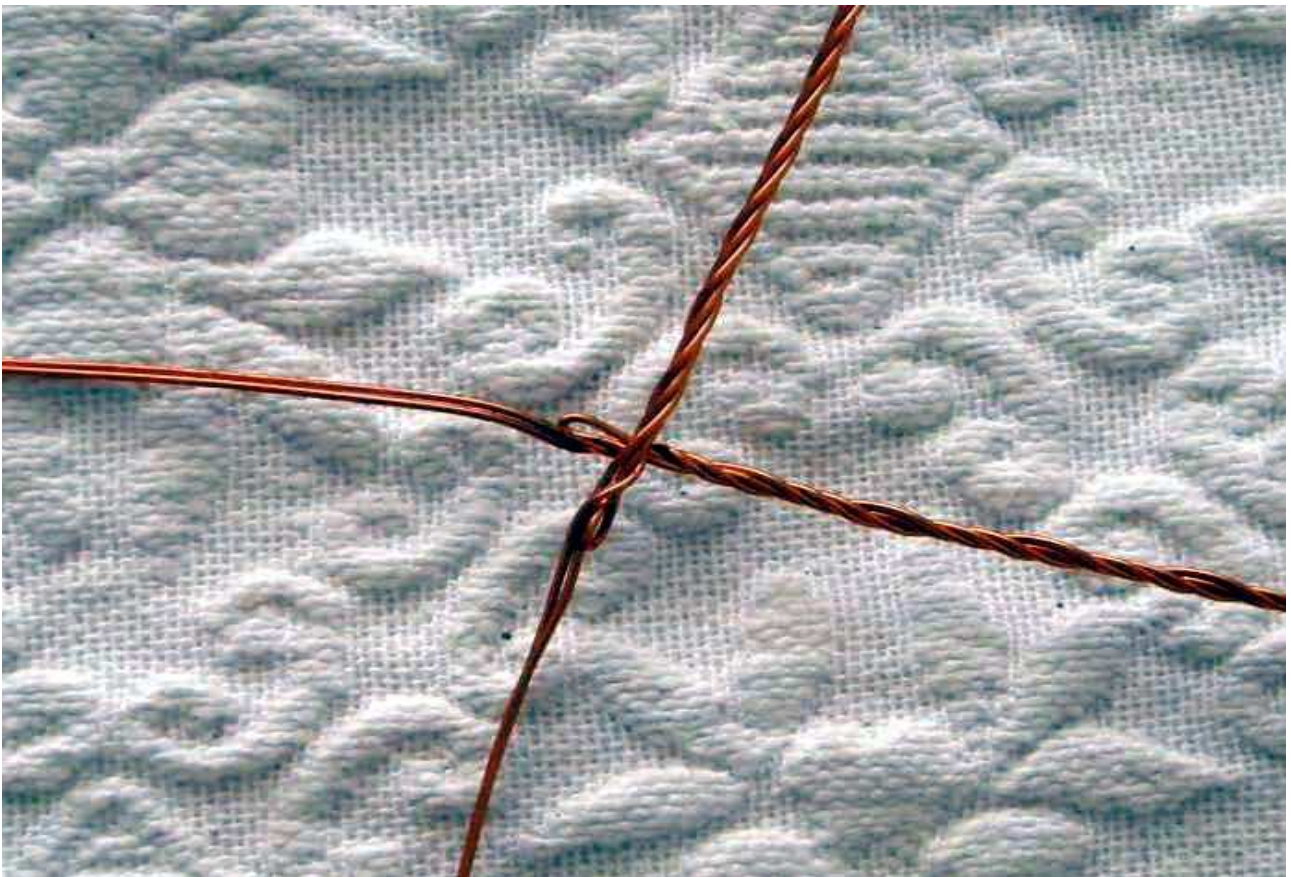
Because we take the end turn rightwards, till it's pretty turned. The same also at the other wire. Turn both wires approximately same firmly.

Now we should have two Moebius wires, the one is a bit smaller than 149mm +

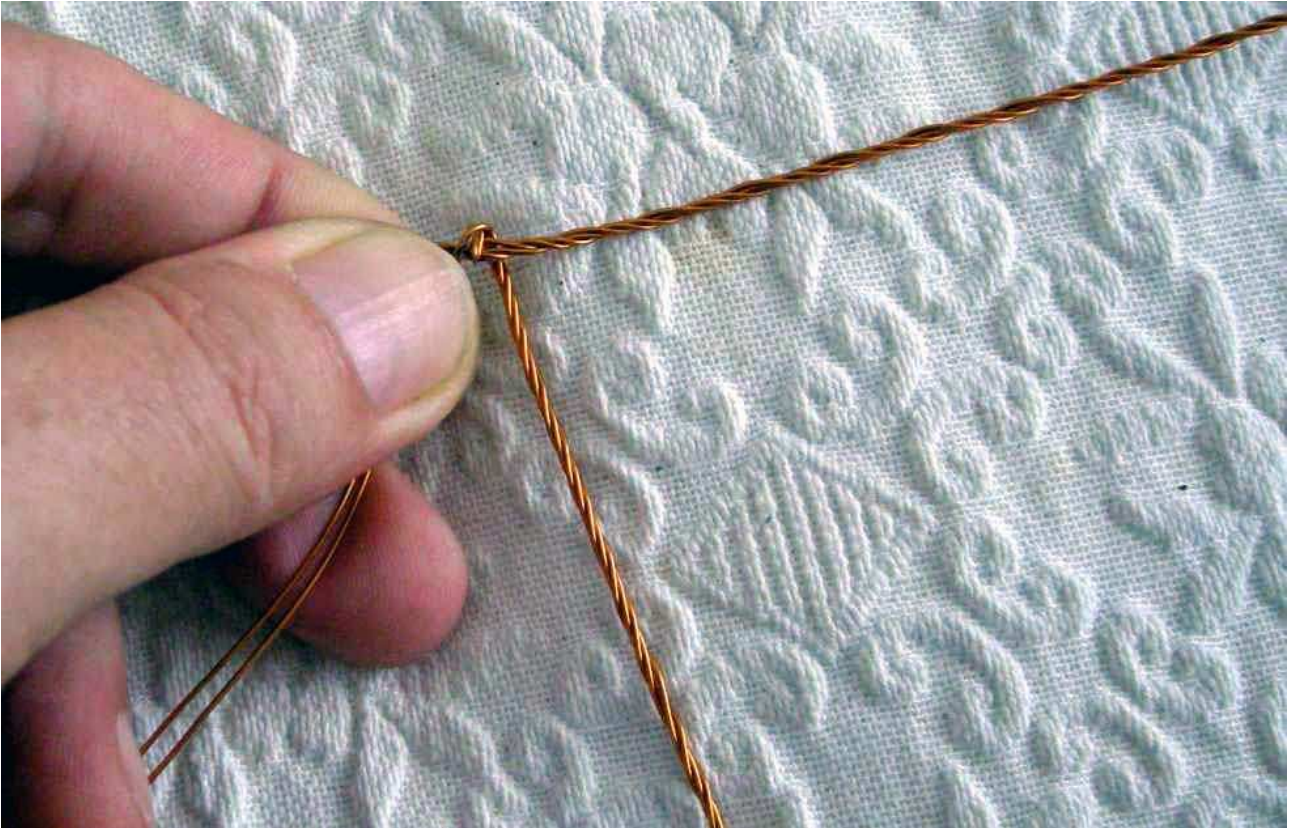
connections, the other one is a bit smaller than 2992mm + connections (smaller because the turning).

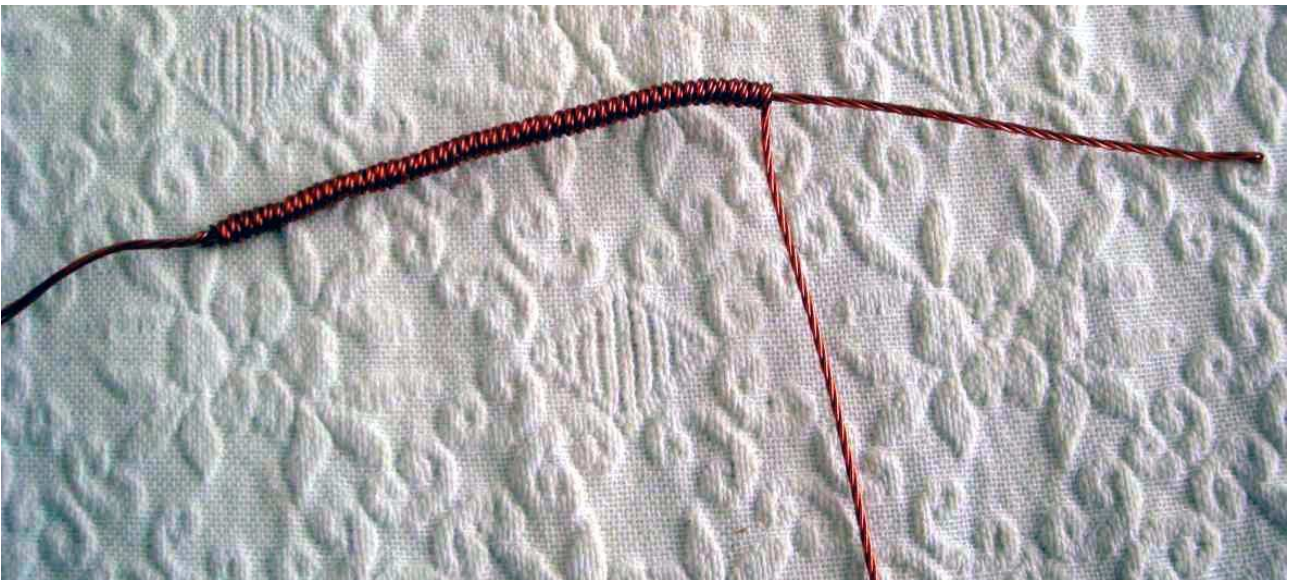


Now take the smaller Moebius wire (center, see photo) at the begin and also the longer Moebius wire at the begin.

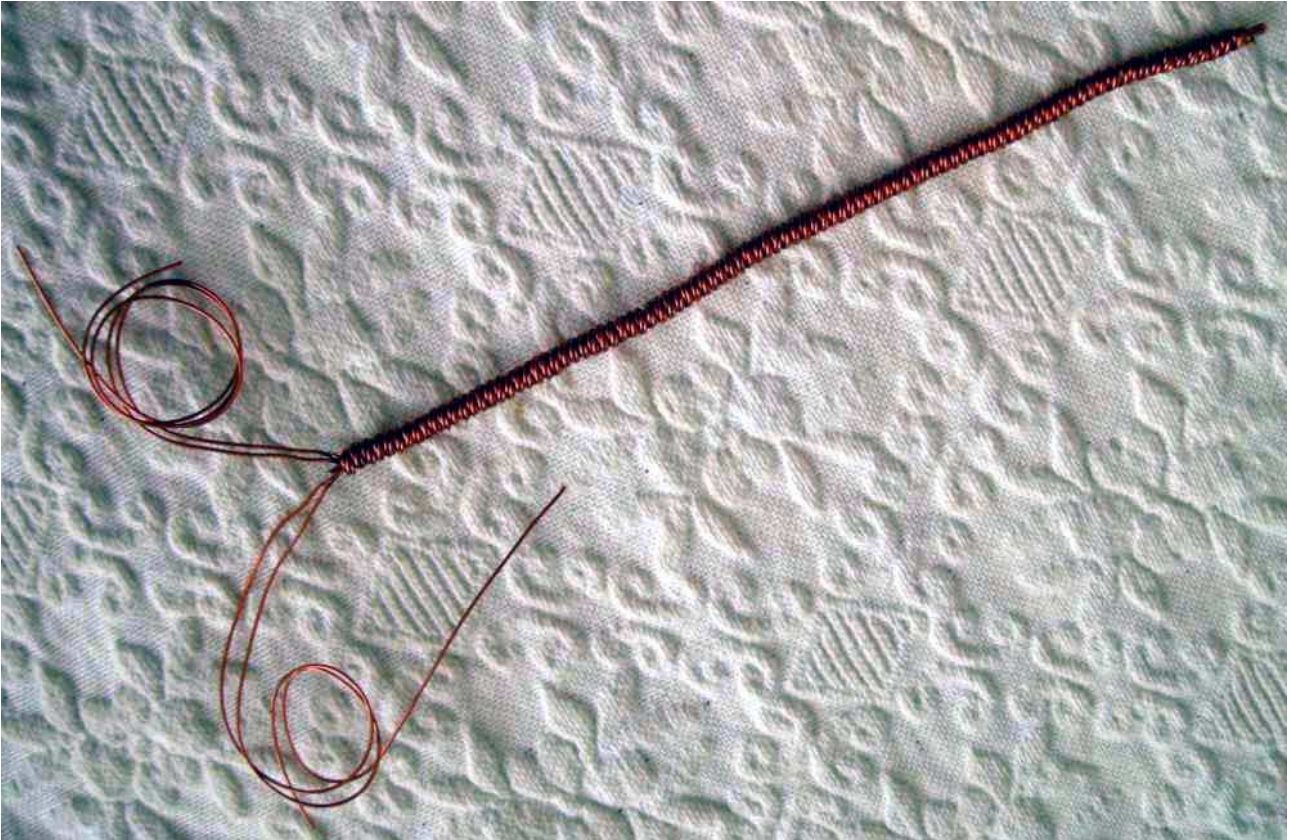


Wrap now the longer wire clockwise around the center by turning the center.





So long as till you have reached the end of the center wire with the longer wire.



Is that done, the DL is almost ready. It's more effective, if you turn it to a double spiral



Not forget to connect the center wrap and the outer wrap in series. That means, to connect the longer connection wire at the center wrap with the shorter wire of the outer wrap (cut so short as possible), to solder and to isolate. Then two wires are left over, connect them on the Zapper board.



You can it also wrap around a crystal, could even make one knot more..., experiment!

How at the most Orgon objects we pour in also a copper net or a copper netting with copper wire soldered on( f.e. 1.5mm<sup>2</sup> cross section), to connect it with the earth, what enhances the effect once more.

This example is only a very small DL, but you could it integrate in a Zapper (poured in in Orgonit). Of course as longer the length of the wire is, as more effective is the Lottchen.

The effect of a DL seems to be weaker as of a Powerwand, but that deludes a lot. You should feel the energy not only with the hand..., but with the whole body, because the energy of the DL radiates on every side. Pour you the DL into a plate, you must not pour in crystals... with. You can put them simply too on the plate (f.e. a rock crystal group). Also a Powerwand suits very good on the DL... And it works good as "filling station of foods" too...

A Powerwand generates a big whirl of Orgon, a Lottchen makes thousands of it, so is it for our "underdeveloped friends" still more improbable to locate us... If a Powerwand generates a chaos energy for them, the Lottchen makes still a much more chaotic energy (finer whirls).

On different requests i wrote yet following additions:

If you want a strong DL, it should be at least, 2 x70 cm, 1 x 1,1m (center length) long or more. As activation is a special electronic always better than the PC. The capacity should be 1 to 2 Watt (2 Watt is the limit of a NE555 IC, see PW electronic). With a Power Mosfet you could enhance the capacity drastically, but then the wire diameter will become a problem because the big electric current (certainly with more as 10A).

With the infuse of the DL i proceed as follows:

After the wrap of it i take a corrugated cardboard carton or a cork plate (don't use polystyrene, because the resin aggresses it), clamp a piece of plastic (size of a shopping bag) on it and fix it below with adhesive tape. Cover before all soldered connections with glue or varnish (maybe several times) and isolate them after with a heat shrink tubing or an insulation tape. Over the plastic i form the „Lottchen“ and fix it with pins. If the form is Ok, i pour a thin coat resin over it (only mixed with metal- or quartz powder, about the same amount like resin), so that the DL is just covered. If all that is hard, i take the DL carefully away off the plastic and remove the pins (rotary motions and pull out the same time with pliers, but with feeling). You can isolate now all with a thin coat of clear varnish (both sides and special the connections). Now is time to pour, f.e. a plate, finish. You can add Rock Crystals and other stones.

By the way i lacquer all coils, special all those with a Moebius Coil, because i had several times almost short circuits. Therefore i don't more pour in LEDs. On the other hand exactly that leaded to the development of the ORGON ENHANCER.

Sandra, Manu & Marco Widmer  
<http://astro-tarot.ch> and <http://astro-tarot.com>

Copyright by Manu & Marco Widmer